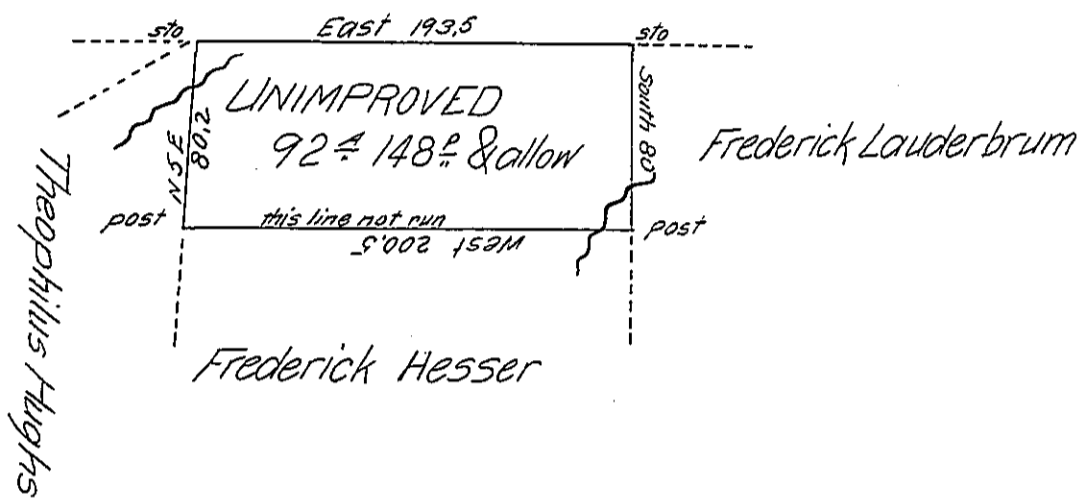


Heirs of John Pott decd



Situate in Norwegian township Schuylkill county containing ninety two acres and one hundred and forty eight perches and the allowance of six per cent surveyed on the 8th day of January 1812 in pursuance of a warrant dated the 23rd day of January 1826 granted John C. Offerman

To Gabriel Hiester Esquire
Surveyor General of Penn^a

F. Lauderbrum
Dep. Sur.
Schuylkill Co.

IN TESTIMONY that the above is a copy of the original remaining on file in the Department of Internal Affairs of Pennsylvania, made conformably to an Act of Assembly approved the 16th day of February, 1833, I have hereunto set my Hand and caused the Seal of said Department to be affixed at Harrisburg, this eighteenth day of April 1906

Isaac D. Brown
Secretary of Internal Affairs.